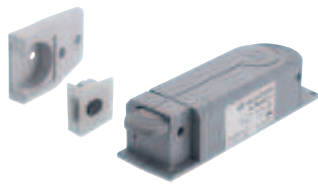
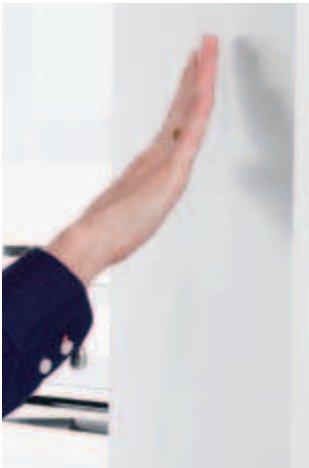
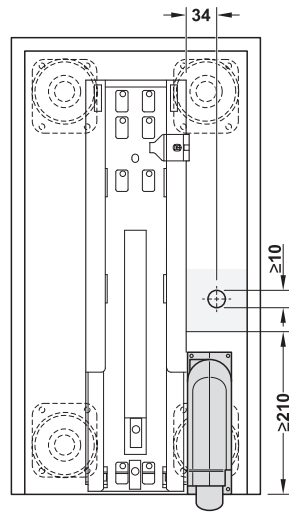
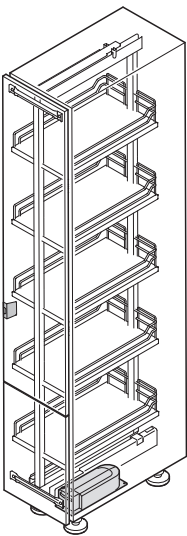


Kesseböhmer eTouch+ Electric door opener for larder units

For Dispensa door front fixing pull out larder unit and for Convoy Premio pull out larder unit



- > Opens by 44 mm by a gentle touch on the cabinet front and holds the front panel in this position. The door can then be opened manually, otherwise it closes automatically.
- > Retrofitting to existing cabinet possible (only with full extension and soft closing mechanism)
- > Space-saving and easy installation



- > Area of application: For Dispensa door front fixing pull out larder unit, and for Convoy Premio pull out larder unit
- > Material: Drive: Plastic/steel, front sensor: Plastic
- > Colour: Drive: Grey, front sensor: Light grey
- > Cabinet width: For door front fixing pull out larder unit 300–600 mm, for pull out larder unit 600 mm
- > Mains voltage: 110–240 V
- > Current consumption: 1.5 A
- > Dim.: Drive: 157 x 54 x 44 mm (L x W x H), front sensor: 32 x 14 x 39 mm (L x W x H)
- > Installation: Door front fixing pull out larder unit: Right, next to the guide rail, pull out larder unit: Opposite the hinge side
- > Weight including fitting: ≤120 kg

Supplied with

- 1 electric drive
- 1 front sensor
- 1 mounting aid
- 1 mains lead 1.5 m with flat Euro plug
- 1 set of fixing material
- Installation instructions
- Operating instructions

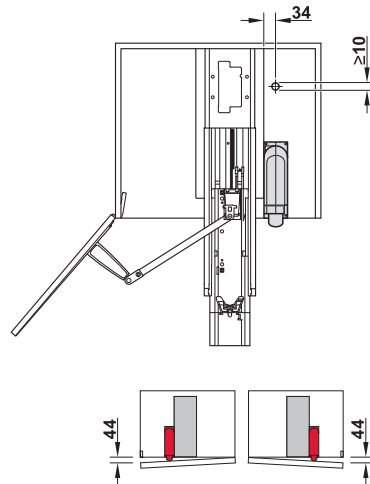
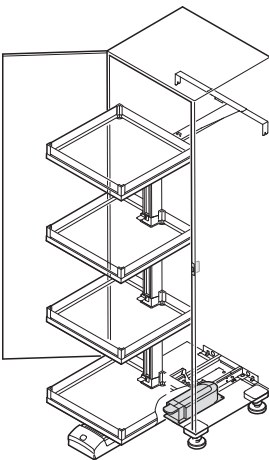
	Cat. No.
Electric door opener	546.72.583

Packing: 1 set

Order reference

The pull out larder unit must be ordered separately.

Dispensa door front fixing pull out larder unit



Convoy Premio pull out larder unit

Dispensa door front fixing pull out larder unit	► MB 7.31
Convoy Premio pull out larder unit	► MB 7.39